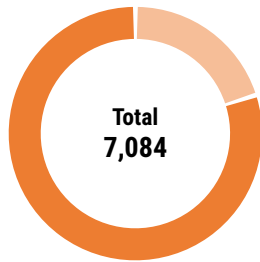


FACTS AND FIGURES



Damage Status - Private Structures

MAJOR HOUSING TYPOLOGIES

Typology	Municipal	District
Stone and Mud Mortar Masonry	97.18%	97.73%
Adobe Structures	2.01%	0.44%
Stone and Cement Mortar Masonry	0.45%	0.46%
Dry Stone Masonry	0.17%	0.11%
Others	0.20%	1.27%

CBS damage assessment survey, 2015

HOUSING RECONSTRUCTION & RETROFIT UPDATES

Reconstruction Status

Total Eligible HHs	5,223
PA Agreement	5,128 (95%)
I st Tranche received	5,128 (95%)
II nd Tranche received	4,848 (375%)
III rd Tranche received	4,452 (771%)

Houses

Under Construction: - Completed: -

Retrofitting Status

Total Eligible HHs	1,317
PA Agreement	0
I st Tranche received	0
II nd Tranche received	1,317

Grievances

Registered: 2,007
Addressed: 1,971

Non-compliances

Registered: -
Addressed: -

Data Updated on: 2019-07-29 00:00:00

PO Presence

Active: No POs Reported

Phased Out: CDS (Shelter), CSIDB (Shelter), GON - DUDBC (Shelter), GON-PAF (Shelter), NRA (Shelter), NRCS (Shelter), PIN (Shelter), SABAL (Shelter), SCI (Education), SCI (Shelter), SCI (Social Protection), tdh-Ger (Shelter)

STATUS OF CONSTRUCTION MATERIALS

Materials	Unit	Req. Quantity*	Ava.	Cost (NRs.)**
Stone	m ³	116,050	Y	-
Aggregate	m ³	120,553	Y	-
Sand	m ³	12,406	Y	-
Timber	cu. ft.	14,370	Y	-
Cement (PPC)	Sack	-	-	-
Cement (OPC)	Sack	399,549	Y	-
Rebars	kgs.	1,256,200	Y	-
Tin	bundle	16,334	-	-
Bricks	pcs.	1,089,847	Y	-

Types of Workers

1. Skilled mason
2. Labourer

Avg. daily wage (NRs.)

-/-
-/-

OTHER SECTORS



Schools

Damaged: 65
Under Construction: 39
Construction Completed: 39



Health Posts

Damaged: -
Under Construction: -
Construction Completed: -

KEY CONTACTS

Municipal Office
Prem Bahadur Tamang
Chairman
9854040168

Municipal Office
Damodar Dhungana
Focal Person
9861610438

Municipal Office
Makhmal Shrestha
Deputy Chairman
9849943796

DLPIU-GMaLI
DLPIU-Chief
9851201088

Municipal Office
Bishnu Prasad Subedi
Chief Administration Officer
9854043740

DLPIU-Building
Prabhakar Lal Karna
DLPIU-Chief
9854041543

HHs WITH LAND ISSUES

No Reported Land Issues

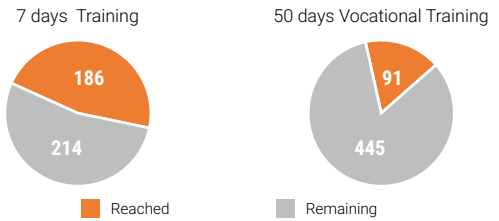
STATUS OF TECHNICAL STAFF

Staff	Available Nos.	Additional Req. Nos.
Engineers	9	-
Sub-Engineers	3	-
Asst. Sub-Engineers	7	-
Masons	- (7 days) - (50 days)	- (7 days) - (50 days)

Source: Municipal survey

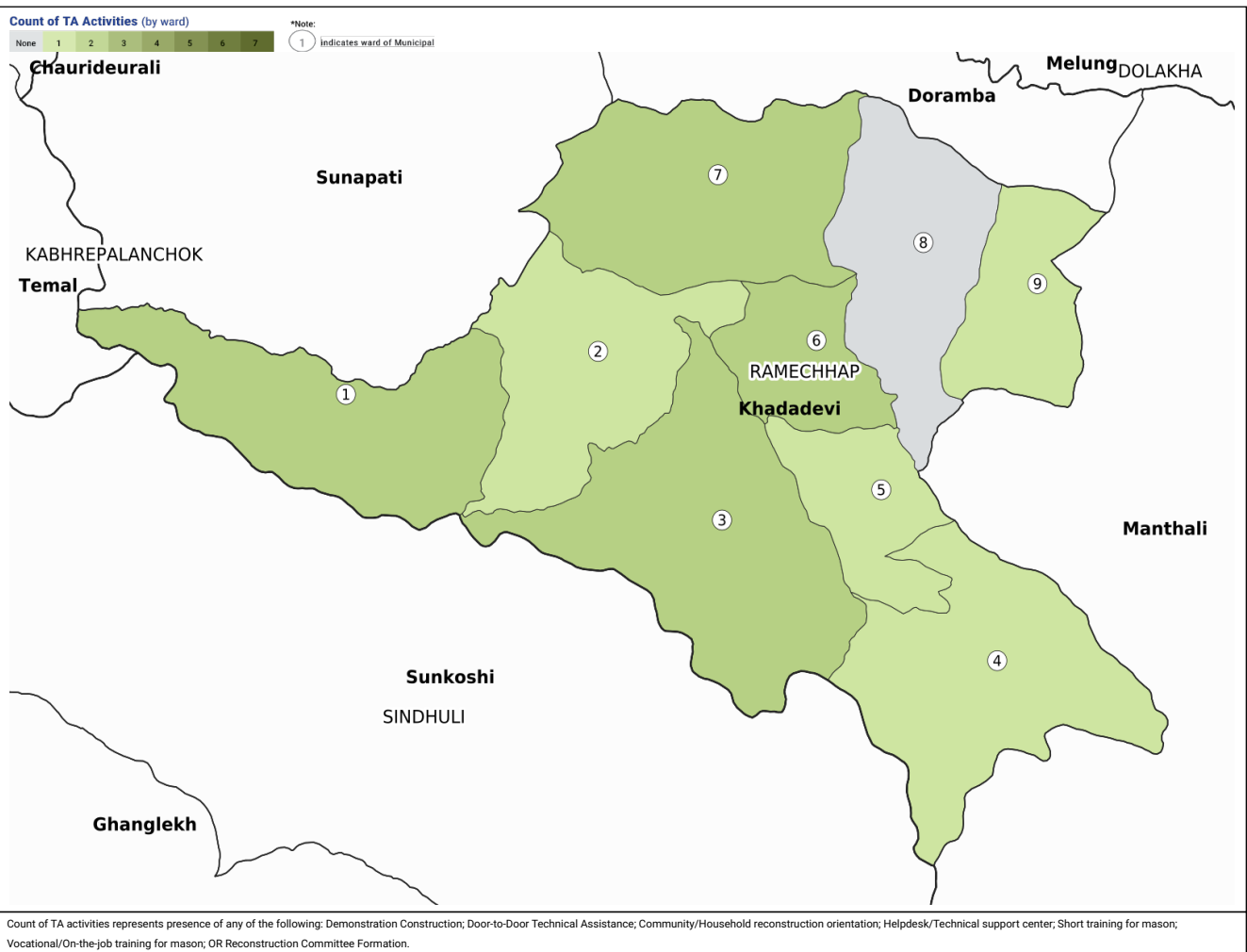
MASON TRAINING

Trainings (# out of total required)



Source: HRRP Analysis

TA ACTIVITIES MAP



FAQs

Q: What documents are required for enrolment in the GoN housing reconstruction programme?

A: Two copies of passport size photos and original copy and photocopy of land ownership card and citizenship card. Local officials at the Rural / Urban Municipality will be able to provide information and support and households can enrol at the Rural / Urban Municipality.

Q: Do we need to pay the engineers when they come to conduct inspections or provide technical assistance?

A: No, you do not have to pay the engineers, or any other staff, conducting inspections or providing technical assistance. If any field staff request payment for conducting inspection or providing technical assistance you should report it to the Rural / Urban Municipality officials.

For further information 1. Prabin Gautam (General Coordinator) 2. (Technical Coordinator) 3. Pranjal Bhandari (Information Management Officer)
9860687776 9840057752